



SPECIFICATIONS

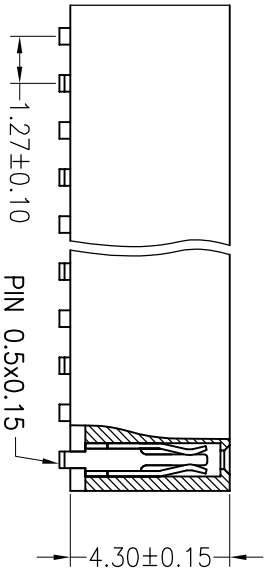
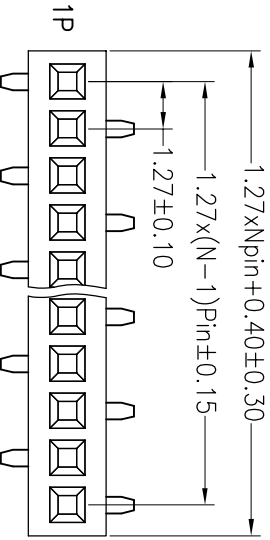
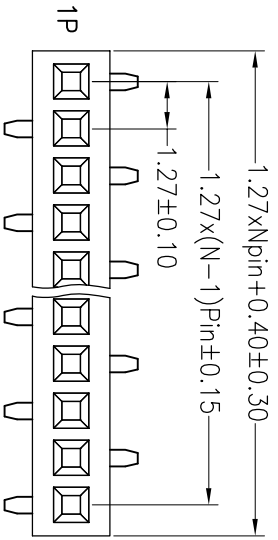
Rated Current: 1.0AMP
 Contact Resistance: 20mΩ Max
 Withstand Voltage: 500V AC/DC
 Insulation Resistance: 1000MΩ Min
 Operation Temperature: -40°C to +105°C

Contact Material: Phosphor Bronze
 Contact Plating: Au Over Ni
 Insulator Material: Polyester (UL94V-0)
 Standard: PA6T
 Max. Processing Temp: 230°C for 30-60 seconds
 (260°C for 10 seconds)

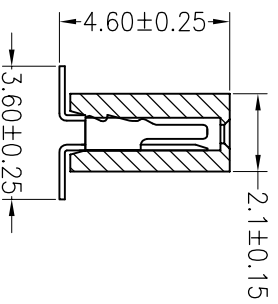
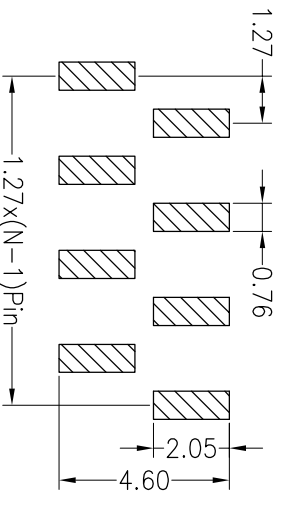
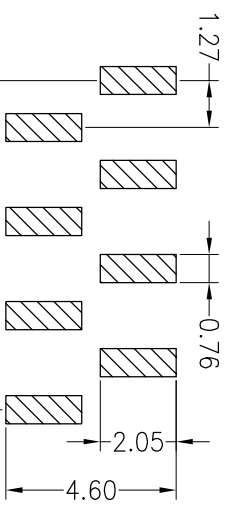
Ordering Information

2443-01 XX X N XX M U X 01

- | | | | |
|---------------------|--|--|---|
| No. of Pins Per Row | Insulator Material Option | Contact Plating | Post |
| 1*50 | A=BK-PBT
B=BK-PA66
C=BK-PA6T
D=BK-PA46
E=BK-PA9T
F=BK-LCP | G1:1U" Gold
G2:1.5U" Gold
G3:2U" Gold
G4:3U" Gold
G5:5U" Gold
G6:10U" Gold
G7:15U" Gold
S0:Gold Flash/Tin
SN:Tin | A=Troy
T=Tube
O=Pe
R=Tape&Reel |



Recommended P.C.B Layout (Top Side)
 (PCB BOARD TOLERANCE ± 0.05)



OPERATION		DRAW		SCALE	FIT	JIN 深圳市锦凌电子有限公司 SHENZHEN JINLING ELECTRONIC CO.,LTD Tel: 86-755-2997-5806/5802 Fax: 86-755-2997-5892		
X.X	±0.30	YYuSheng	12.09.14	UNIT	mm			
X.XX	±0.20	CHECK		SIZE	A4	PART NO. 2443-01XXXXXXMU01		
X.XXX	±0.10	APPROVE		SHEET	1/1	TITLE: 1.27PF 1XNPin H4.3 SMT		
Angle	±3°	CHANGE		PROJ.				
DIM	TOL							
REV	DATE	MODIFICATION DESCRIPTION						
A0	2012.09.14	NEW DRAWING						
1								